

*UMR cDNA Resource Center*

*University of Missouri-Rolla*

*1870 Miner Circle*

*Rolla, MO 65409*

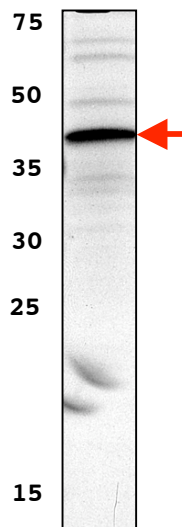
Url: [www.cdna.org](http://www.cdna.org)

Email: [cdna@umr.edu](mailto:cdna@umr.edu)

Voice: (573) 341-7610

Fax: (573) 341-7609

---



Human **Prostaglandin E receptor 2 (subtype E2) (PTGER2) 3XHA-tagged (N-terminus)** expression, assayed by coupled *in-vitro* transcription/translation, using the T7 promoter in pcDNA3.1+